

Product Installation Instructions

Installation Instructions for

Step Nosing F Series Concrete and Timber

Step Nosing F Series 2 Part Concrete and Timber

Anti Slip Strip E Series Concrete and Timber

Guidance Strips G Series Flat Surfaces

Handrail H Series Wall Mounted and Freestanding
Round Handrails

Installation Instructions For

Step Nosing F Series

Two-Part Installation Concrete and Timber



Step Nosing - F Series

Two-Part Installation Concrete and Timber

V18.1

1. Preparation of Surface

- Brush the surface clean of dust and debris. If necessary, clean with an industrial cleaner.
- Remove any paint or sealant and then allow the surface to dry.
- It is better for adhesion if timber surfaces are dry.



Steps with exposed sides:

Ensure the nosing is set back from exposed side by at least 20mm to ensure the outer edge of the nosing does not present a sharp hazard.

Built-in steps, Installed outdoors:

Leave a 3mm gap between the nosing and the built-in sides, to allow for thermal expansion, and water drainage.

NOTE: The maximum recommended length for installation in outdoor situations is 1.5 metres. A 3mm expansion / drainage gap must be left between lengths.

2. Alignment (for installation onto more than one step)

- Place one piece of step nosing on the top step and one on the bottom step.
- Run a string line from the left edge of the top nosing to the left edge of the bottom nosing.
- This will give you a straight, true line.



3. Locating Holes for Fixers (for Timber skip to step 5)

- Place the nosing firmly against the riser of the step.
- Line it up with your string line.
- Mark the location of the drill holes with the drill.
- Remove the nosing.

NOTE: The F14-175 nosing comes pre-drilled with holes every 100mm. You only require 4 fixers per metre. Fixers should be zig-zagged across the pre-drilled holes to give maximum support to both sides of the nosing.

4. Drilling holes for fixers (for Timber skip to step 5)

- Using a 6mm masonry bit, and a concrete drill, drill the hole that will house the plastic anchor.
- Wipe away any dust or debris.
- Place the plastic anchor fully in to the holes.



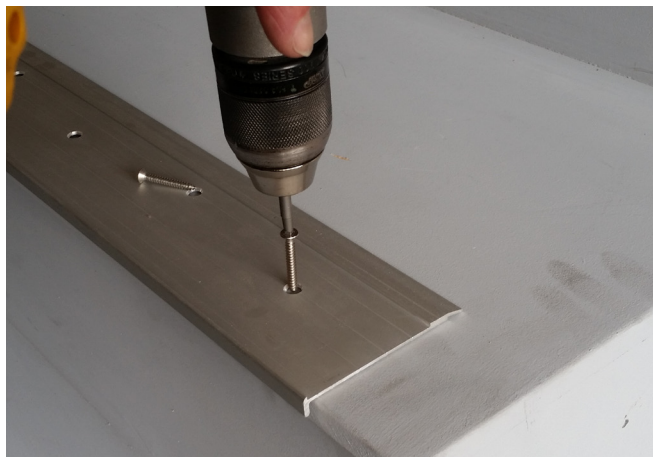
5. Applying Adhesive

- Lay a 3mm bead of polyurethane adhesive (such as Wurth KD Bond and Seal or Bostik Seal n Flex FC) in a wave pattern over the full length of the underside of the nosing.
- Keep the adhesive clear of the outside edge and the drill holes.



6. Securing the nosing profile

- Place the nosing firmly back onto the step, lining up the drill holes.
- Tighten the screws firmly using a battery hand drill- this will create a strong, even bond.
- For fixing on to wooden substrate follow the previous instructions but the plugs are not required.



Adhesive Usage:

11 metres per 600ml sausage

Ecoglo supply screw fixers with all orders and can also supply Wurth KD Bond and Seal in 600ml Sausage form with Applicator Gun.

7. Fixing Insert Strip

- Check nosing extrusion channel is free from dust, dirt, grease and moisture.
- Dust or wipe with methylated spirits or damp cloth if required.
- Lay a zigzag of adhesive, 1mm deep, 3mm wide on to the strip.
- Ensure that you don't over apply adhesive as it will spill out once the insert is placed into the nosing.



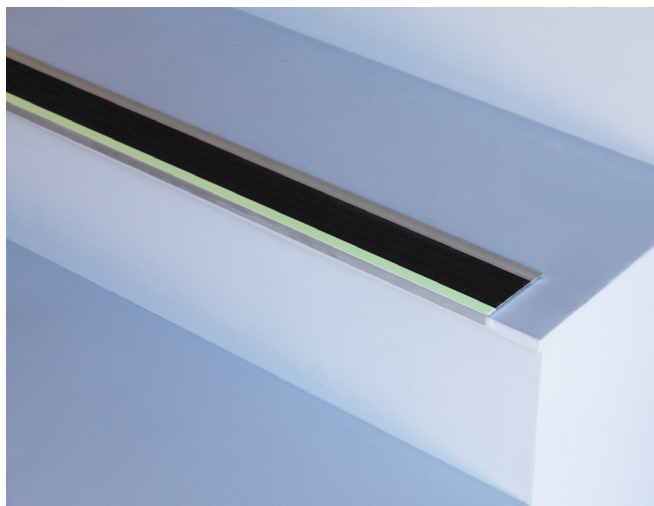
8. Insert strip into the nosing

- Line up the strip insert then place firmly onto the nosing.
- Press in place to ensure even contact, between the adhesive, and the surface of the channel.
- Use a roller or your foot to apply firm downward pressure.
- Use an alcohol wipe to remove any spill over of adhesive.



9. Curing of Adhesive

- Allow approximately 24 hours for adhesive to cure.



Installation Instructions For

Step Nosing F Series

Concrete and Timber



Step Nosing - F Series Concrete and Timber

V18.1

1. Preparation of Surface

- Brush the surface clean of dust and debris. If necessary, clean with an industrial cleaner.
- Remove any paint or sealant and then allow the surface to dry.
- It is better for adhesion if timber surfaces are dry.

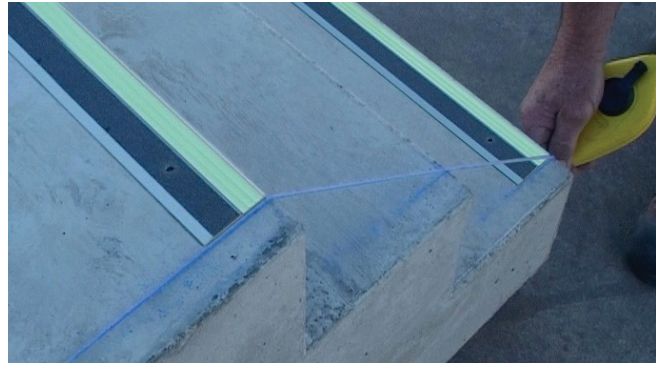


Steps with exposed sides:

Ensure the nosing is set back from exposed side by at least 20mm to ensure the outer edge of the nosing does not present a sharp hazard.

2. Alignment (for installation onto more than one step)

- Place one piece of step nosing on the top step and one on the bottom step.
- Run a string line from the left edge of the top nosing to the left edge of the bottom nosing.
- This will give you a straight, true line.



Built-in steps, Installed outdoors:

Leave a 3mm gap between the nosing and the built-in sides, to allow for thermal expansion, and water drainage.

NOTE: The maximum recommended length for installation in outdoor situations is 1.5 metres. A 3mm expansion / drainage gap must be left between lengths.

3. Locating Holes for Fixers (for Timber skip to step 5)

- Place the nosing firmly against the riser of the step.
- Line it up with your string line.
- Mark the location of the drill holes with the drill.
- Remove the nosing.



4. Drilling holes for fixers (for Timber skip to step 5)

- Using a 6mm masonry bit, and a concrete drill, drill the hole that will house the plastic anchor.
- Wipe away any dust or debris.
- Place the plastic anchor fully in to the holes.



5. Applying Adhesive

- Lay a 3mm bead of polyurethane adhesive (such as Wurth KD Bond and Seal or Bostik Seal n Flex FC) in a wave pattern over the full length of the underside of the nosing.
- Keep the adhesive clear of the outside edge and the drill holes.



Adhesive Usage:

22 metres per 600ml sausage

Ecoglo supply screw fixers with all orders and can also supply Wurth KD Bond and Seal in 600ml Sausage form with Applicator Gun.

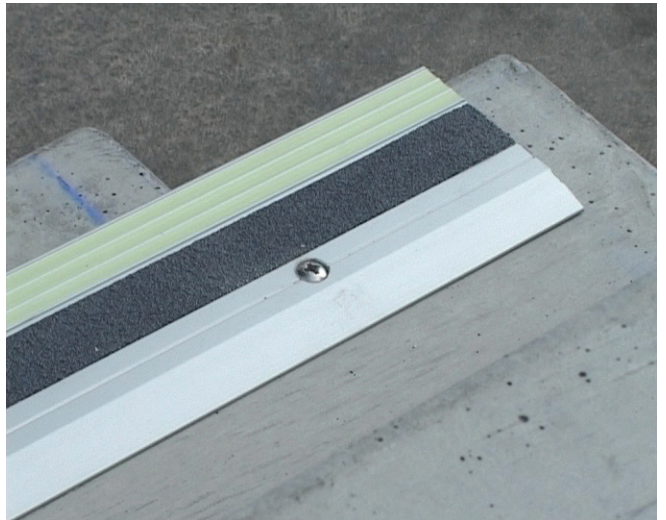
6. Fixing the Nosing

- Place the nosing firmly back onto the step, lining up the drill holes.
- Tighten the screws firmly using a battery hand drill- this will create a strong, even bond.
- For fixing on to wooden substrate follow the previous instructions but the plugs are not required.



7. Curing of Adhesive

- Use an alcohol wipe to remove any spill over of adhesive. Allow approximately 24 hours for adhesive to cure.



 **ecoglo**[®]
VISIBLY BETTER

Ecoglo International Limited
Email: info@ecoglo.com
www.ecoglo.com



Installation Instructions For

Anti-Slip Strip E Series

Concrete and Timber



1. Preparation of Surface

- Thoroughly clean the surface with industrial strength cleaner if necessary.
- Remove any loose paint or sealant and then allow surface to dry.
- If painted or coated, check that adhesive is compatible with the paint or seal coating. IF IN DOUBT REMOVE COATING.

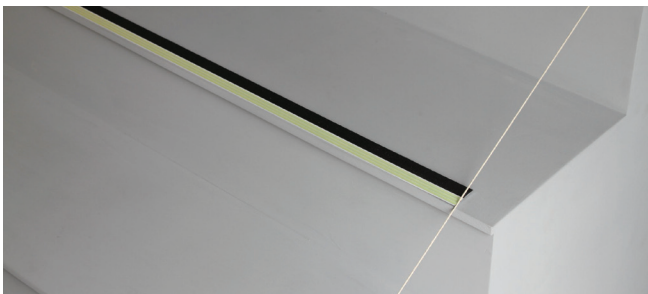


Note: Installation onto Concrete Surfaces

- It is important to use adhesive only for concrete installations. The adhesive will allow some movement to compensate for thermal contraction and expansion and will provide durable adhesion to the concrete substrate.

2. Alignment of the Strips

- Mark 50mm from the left edge of the top step.
- Mark 50mm from the left edge of the bottom step.
- Place a string line between the marks to ensure the strip on each step will be correctly aligned.



- The maximum recommended length for installation in outdoor situations is 1.5 metres.
- There must be a 3mm gap between lengths. This allows for thermal expansion in extreme weather conditions and also aids in water drainage off the step tread.
- Leave a 3mm gap either side of built-in steps

3. Preparation of the Strip

- Clean back of contrast strip with soft cloth and if necessary use methylated spirits (or similar solvent) to remove oil or grease
- Allow to dry for approximately 1 minute.

4. Applying the Adhesive

- Apply a 3mm zigzag bead of polyurethane adhesive (such as Wurth KD Bond and Seal or Bostik Seal n Flex FC) to the back of the strip, 3mm in from the edges.
- Continue along the length of the strip.



Adhesive Usage:

E2 Series - 30 metres per 600ml

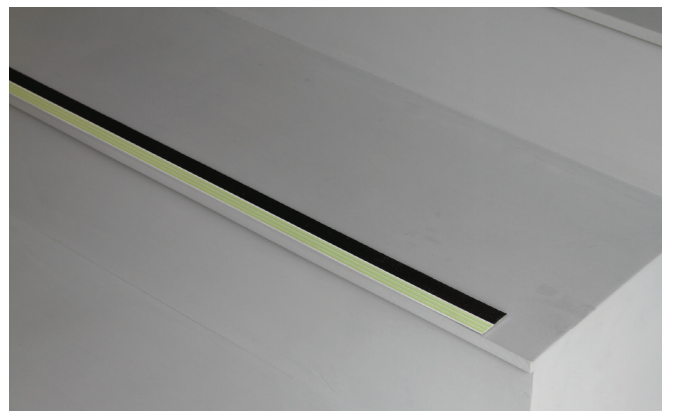
E4 Series - 25 metres per 600ml

E14 Series - 25 metres per 600ml

Ecoglo can supply Wurth KD Bond and Seal in 600ml Sausage form with Applicator Gun.

5. Placement of the Strip

- Line up the strip with your alignment marks and position approximately 2-3mm back from the front straight edge of the step.
- Place in position with the photoluminescent (light green) component of the strip to the leading edge of the step (see image below).



Steps with exposed sides:

Ensure the nosing is set back from exposed side by at least 20mm to ensure the outer edge of the nosing does not present a sharp hazard.

6. Apply Pressure to the Strip

- Apply even pressure to spread the adhesive beneath the strip using a hand roller.
- If necessary stand on each strip to ensure good contact between the strip and the step.



7. Allow the Adhesive to Cure

- Immediately following installation close off the area for a period of 8 hours to avoid the Ecoglo strip being moved whilst the adhesive is in the early stages of "cure".
- Wait until adhesive has fully cured (allow at least 24 hours) before trimming any excess from each strip with a sharp blade.

8. Use of Fixers (for Outdoor Timber installations only)

Note: Indoor installations only require adhesive

Outdoor Timber becomes a two step process

For outdoor timber installations both adhesive and fixers should be used because installation onto outdoor timber surfaces varies due to the uneven nature of timber, the various types of timber (eg pine or kwila), the protective coating (eg paint or sealer) and seasonal temperature variances.

Step 1:

- Apply adhesive as per steps 3-4 taking care to keep adhesive away from pre drilled holes.
- Place strip as per steps 5-6.
- Leave the adhesive to cure for 7 days before installing the fixers.

Step 2:

- Place a screw fixer into each hole and drill in securely using a battery drill.
- Do not fully tighten the fixers to avoid compressing the adhesive.

For timber installations the strips should be pre-drilled through the anti-slip material. The table below shows the number of drill holes required to allow for the natural contraction and expansion of timber.



Hole Drilling Specifications

Hole Drilling Specification	Less than 350mm	350mm - 650mm	650mm - 950mm	950mm - 1250mm	1250mm - 1500mm
Number of Holes	2	3	4	5	6

Holes for fixers are usually drilled as part of manufacturing. If for any reason the product was ordered, or supplied, without holes where fixers are required then Ecoglo recommend the hole spacings shown in the table above for maximum durability.

 **ecoglo**[®]
VISIBLY BETTER

Ecoglo International Limited
Email: info@ecoglo.com
www.ecoglo.com

Installation Instructions For

Guidance Strips G Series

Flat Surfaces



Guidance Strips G-Series Flat Surfaces

V18.1

Ecoglo G-Series guidance strips are extremely versatile and can be applied on various types of surface, including walls, skirting board, floors, door frames, flat sided handrails and steps*. Generally, as long as the substrate is clean, flat and dry the product can be successfully installed.

Ecoglo G-Series guidance strips have a self-adhesive backing with a release tape for simple installation. (See Section 4 of these instructions if in any doubt about adhesion).

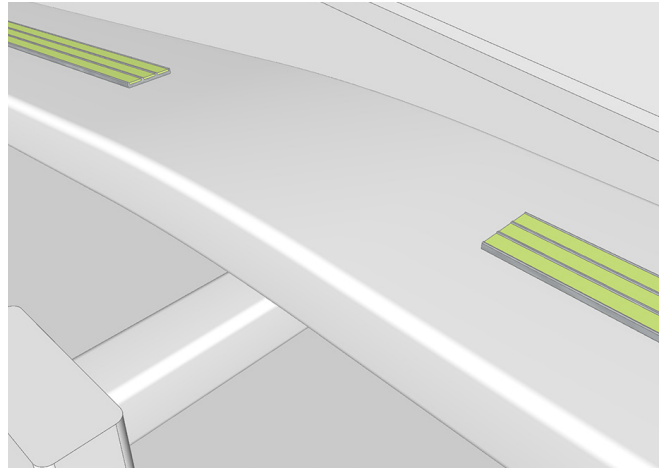
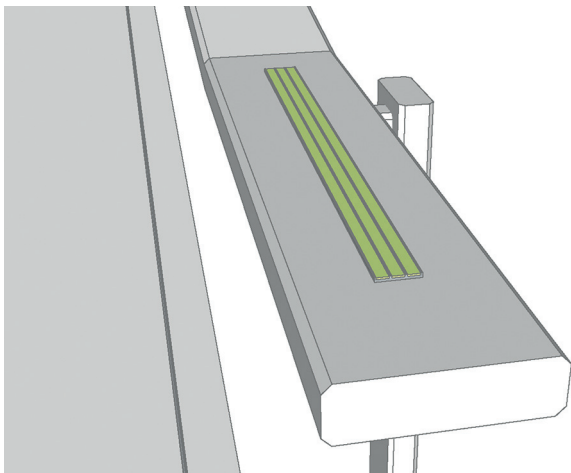
***Ecoglo G6-003 guidance strips are suitable for use on indoor steps which are not subject to daily use or heavy foot traffic. For outdoor steps, or steps which will be subjected to frequent or heavy foot traffic, visit www.ecoglo.com or contact Ecoglo at info@ecoglo.com for information on more suitable Ecoglo products.**

1. Preparation of Surface

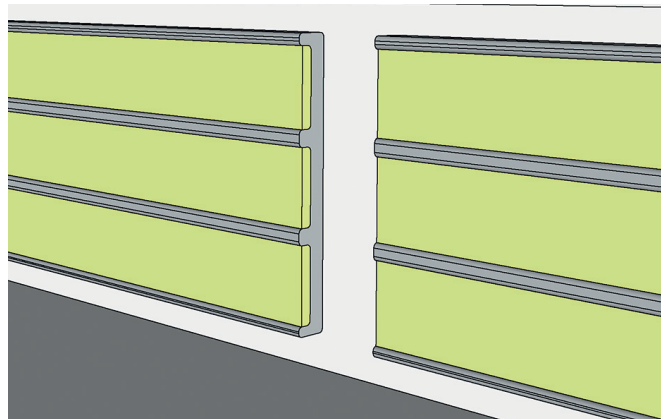
- Thoroughly clean the surface with an industrial strength cleaner if necessary.
- Remove any loose paint or sealant and then allow the surface to dry.
- If the surface has been painted or coated, check that adhesive is compatible with the paint or seal coating.
IF IN DOUBT REMOVE COATING.
- The tape is suitable for a temperature range of 0-40C.
- Maximum installation length is 1500mm.

2. Positioning, Alignment of the Strips

- If installing on a flat handrail or other surface such as a wall, mark the position where the strip is to be placed. Use a chalkline, plumb-line or spirit level if necessary to ensure the line is straight.
- If installing on steps, mark 50mm from the left edge of the top step, and 50mm from the left edge of the bottom step. Place a string line between the marks to ensure the strip on each step will be correctly aligned. This will give a straight, true line.
- Offer up the strip to the surface it is to be attached to, to make sure both surfaces are parallel. If the strip does not sit perfectly flat against the surface without being held in place, carefully bend the strip until it sits perfectly flat against the surface.



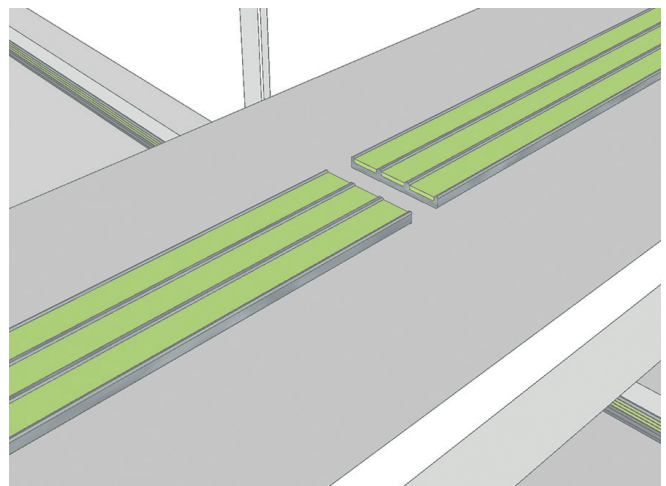
Do not bend guidance strips over bends. Set the strip 50mm from the bend.



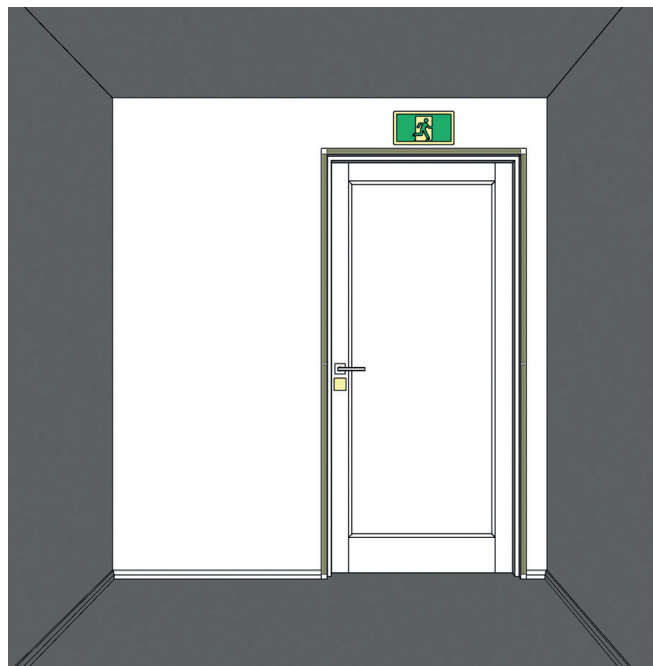
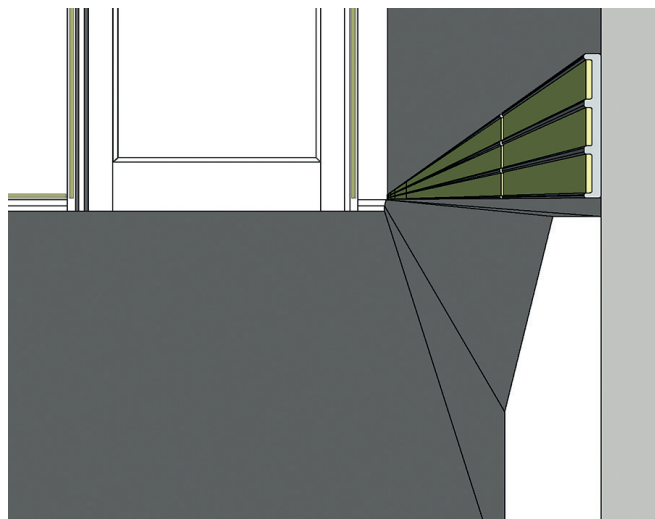
Where strips are to be butted together, there must always be a 3mm expansion gap between them. This allows for expansion and contraction between the Ecoglo strip and the building surface.

3. Placement of Adhesive-backed Strip

- Carefully peel off the release-tape backing from the strip.
- Carefully line the strip up with any alignment marks.
- Press the strip firmly in place to ensure even contact between the adhesive tape and the surface to which it is being applied.

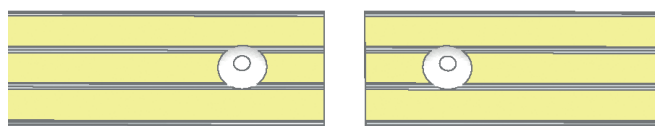


Guidance strip can be used to mark corridors, lobbies and indoor lengths of path and can be mounted either on the floor within 100mm of the wall, or on the wall within 100mm of the floor. Gaps of 3mm must be placed between strips.



4. Mechanical Fixers (Screws or Rivets)

- For handrails in schools or other places where vandalism may occur, screws (for timber, as described above) or rivets (for metal) **MUST** be used. Install one screw/rivet 10-15mm in from each end of each strip.
- For outdoor timber installations screws **MUST** also be used so that the adhesive tape isn't able to lift if the timber distorts or absorbs moisture due to normal weather conditions. 5mm pan head screws are suitable to be screwed down firmly but not so tight that the tape squashes under the strip. Install one screw 10-15mm in from each end and one screw in the middle of each strip.
- If in doubt about the adhesion of the strips to any substrate, use screws/rivets for additional security. Install one 10-15mm in from each end and one in the middle of each strip.



For guidance strips on handrails used in schools or public places, screws or rivets must be installed 10 – 15mm in from the end of each strip.

 **ecoglo**[®]
VISIBLY BETTER

Ecoglo International Limited
Email: info@ecoglo.com
www.ecoglo.com

Installation Instructions For

Handrail H Series

Wall Mounted and Freestanding
Round Handrails



Handrail - H Series

Round Handrails

V18.1

1. Preparation of Surface

- Thoroughly clean the surface with an industrial strength cleaner.
- Remove any loose paint or sealant and then allow the surface to dry.
- Handrail must be dry



2. Alignment

- To ensure the Ecoglo Handrail Strip is installed in line, place a string line, slightly off centre, from the top end of the handrail to the bottom.
- This will serve as a guide for where to place each strip accurately onto the rail.



3. Placing Strip onto Handrail

- Remove the backing paper from the tape
- Line up the outside edge with the string line. The strip should be positioned approximately 50mm from the end of the handrail.
- Press firmly down.
- Repeat the above steps for the full length of the handrail leaving a 3mm gap between each length of handrail.



- If the overall length of the handrail is longer than 1 metre as supplied, then the 1 metre lengths should be placed at each end of the handrail and a separate unit should be measured and cut for the middle section.
- Following any cutting of the product, ensure edges are filed smooth and rounded.



4. Mechanical Fixers (screws or rivets)

- For handrails in schools or other places where vandalism may occur, screws (for timber, as described above) or rivets (for metal) **MUST** be used. Install one screw/rivet 10-15mm in from each end of each H series strip.
- For outdoor timber installations screws **MUST** also be used so that the adhesive tape isn't able to lift if the timber distorts or absorbs moisture due to normal weather conditions. 5mm pan head screws are suitable to be screwed down firmly but not so tight that the tape squashes under the strip. Install one screw 10-15mm in from each end and one screw in the middle of each H series strip.
- If in doubt about the adhesion of the strips to any substrate, use screws/rivets for additional security. Install one 10-15mm in from each end and one in the middle of each H series strip.

Note: Flat Handrails (applies to indoor installations only)

- Ecoglo G3-001 or G6-003 can be used on indoor handrails that have flat tops. The same method of installation applies.



Note: Under no circumstances, should handrail product be installed on or around a curve. This includes bends at each end of the handrail.