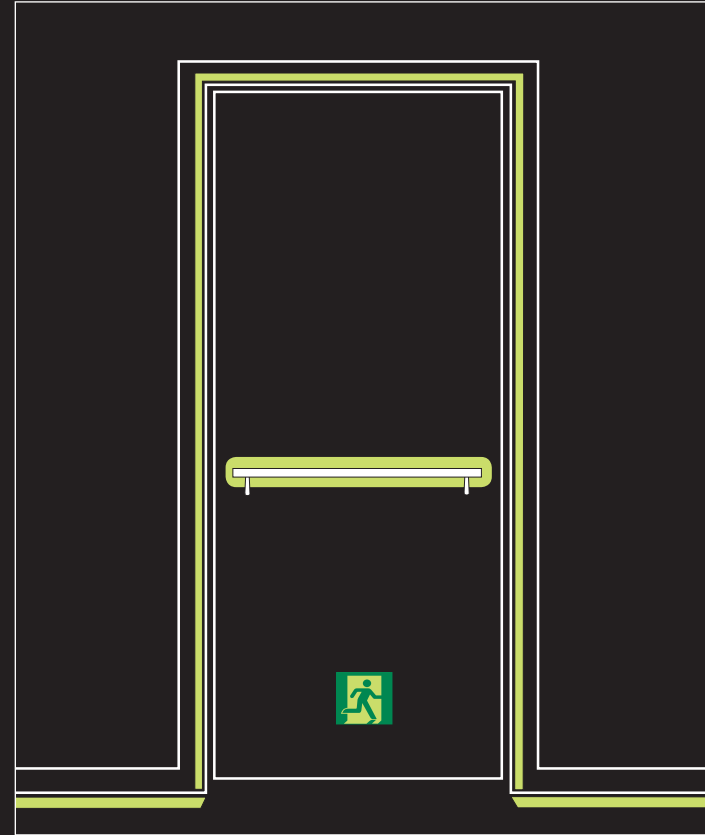


Ecoglo
Photoluminescent
Path Markings
to meet
2015 IFC/IBC
Luminous Egress Path Markings
and
2015 NFPA 101
Life Safety Code
Exit Stair Path Markings



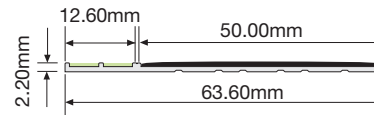
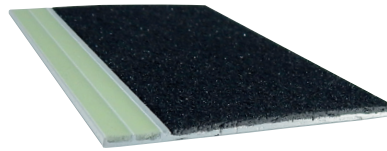
Path Markings

The following Path Markings meet 2015 IFC/IBC 1025.2 requirements only.



Email: info@ecoglo.com
www.ecoglo.com

E14-075 Step Edge Contrast

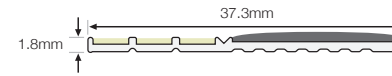


Available in standard lengths from 600mm to 1500mm (in 100mm increments).

Custom cutting is available from 2450mm and 3060mm lengths

E14-075 For polyurethane adhesive fixing
E14-075P Punched for screw fixing

E2-071 Step Edge Contrast

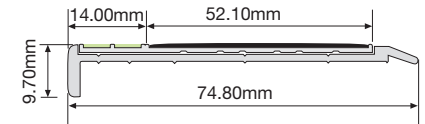
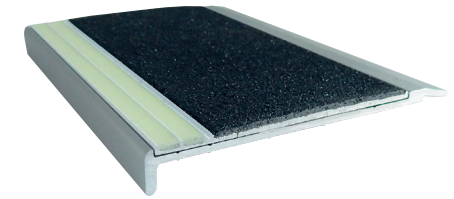


Available in standard lengths from 600mm to 1500mm (in 100mm increments).

Custom cutting is available from 2450mm and 3060mm lengths

E2-071 For polyurethane adhesive fixing
E2-071P Punched for screw fixing

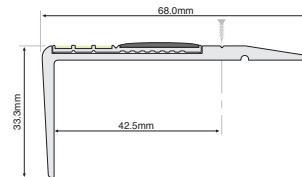
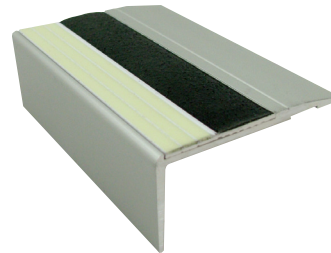
F14-175 Step Nosing



Available in standard lengths from 600mm to 1500mm (in 100mm increments).

F14-175 For fixing with screws and polyurethane adhesive

F4-171 Step Nosing



Available in standard lengths from 600mm to 1500mm (in 100mm increments).

F4-171 For fixing with screws and polyurethane adhesive

Path Markings

The following Path Markings meet both 2015 IFC/IBC 1025.2 and 2015 NFPA 101 Life Safety Code 7.2.2.5.5 requirements.



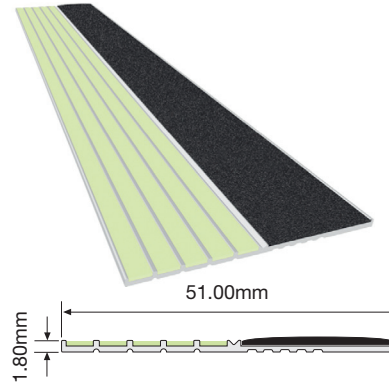
S5-DHM
Door Handle Marker



Size 100mm x 100mm

S5-DHM1010 Release tape pre-fitted

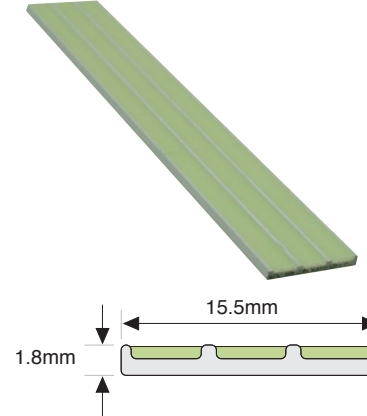
E4-073 Step Edge Contrast



Available in standard lengths from 600mm to 1500mm (in 100mm increments).
Custom cutting is available from 2450mm and 3060mm lengths

E4-073 For polyurethane adhesive fixing
E4-073P Punched for screw fixing

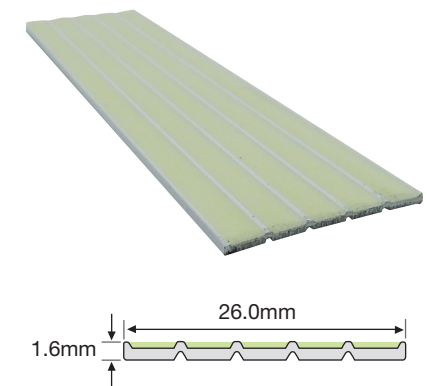
G3-001 Guidance Strip



Available in 1000mm and 3060 lengths

G3-001 For polyurethane adhesive fixing
G3-001P Punched for screw fixing
G3-001T Release tape pre-fitted

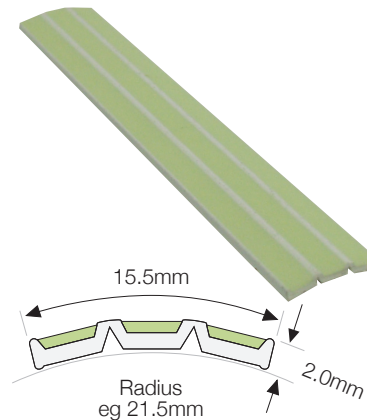
G6-003 Guidance Strip



Available in 1000mm and 3060 lengths

G6-003 For polyurethane adhesive fixing
G6-003P Punched for screw fixing
G6-003T Release tape pre-fitted

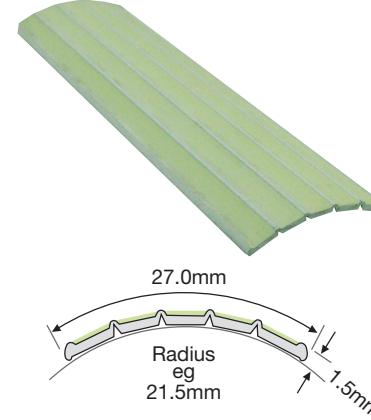
H3-001 Handrail Marker



Available in 1000mm and 3060mm lengths

H3-001T Release tape pre-fitted

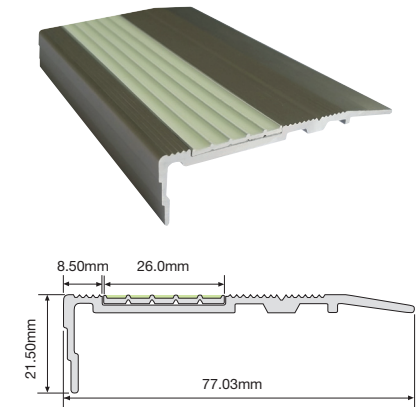
H5-001 Handrail Marker



Available in 1000mm and 3060mm lengths

H5-001T Release tape pre-fitted

F2-003 Step Nosing



Available in standard lengths from 600mm to 1500mm (in 100mm increments).

F2-003 For fixing with screws and polyurethane adhesive

Emergency Exit Signs

Emergency Exit Signs to meet
2015 IFC/IBC 1025.2.6.1 and
2015 NFPA 101 Life Safety
Code 7.2.2.5.5.8


VISIBLY BETTER

Email: info@ecoglo.com
www.ecoglo.com

**Directional Pictogram
Right Facing RMR**



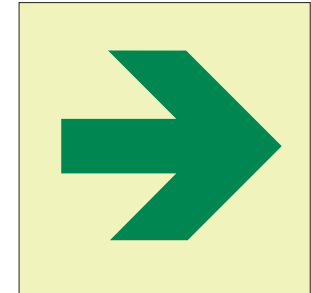
Exit straight on from here
Product Code: S5-RMR1010
Size: 100mm x 100mm

**Directional Pictogram
Left Facing RML**



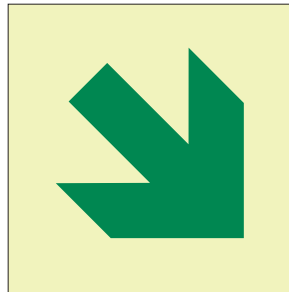
Exit straight on from here
Product Code: S5-RML1010
Size: 100mm x 100mm

Directional Arrow Straight



Travel in this direction
Product Code: S5-ARS1010
Size: 100mm x 100mm

Directional Arrow Diagonal



Travel in this direction
Product Code: S5-ARD1010
Size: 100mm x 100mm

**These signs can be used alone or in combination with
another sign as illustrated here.**

